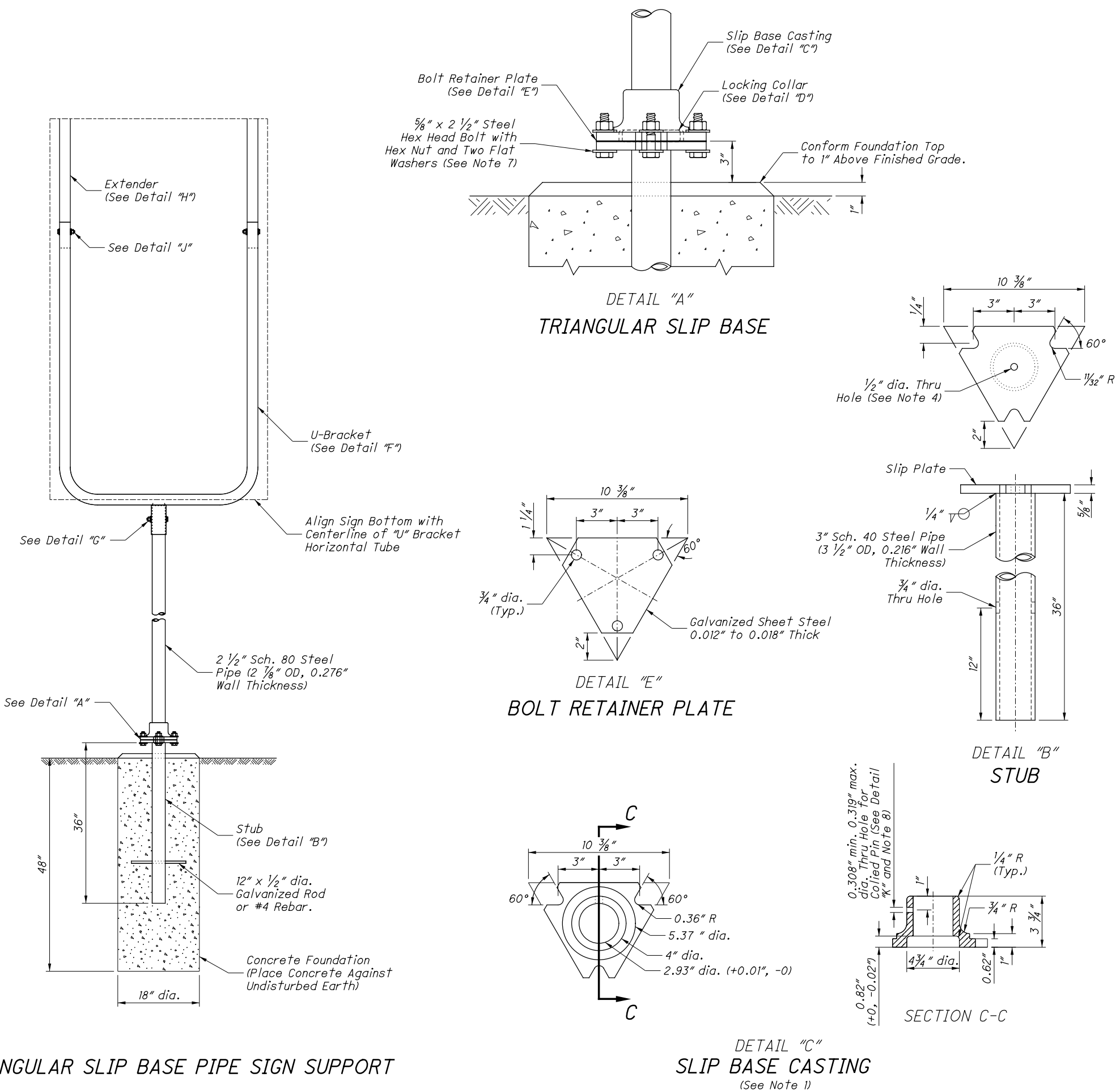


NOTES:

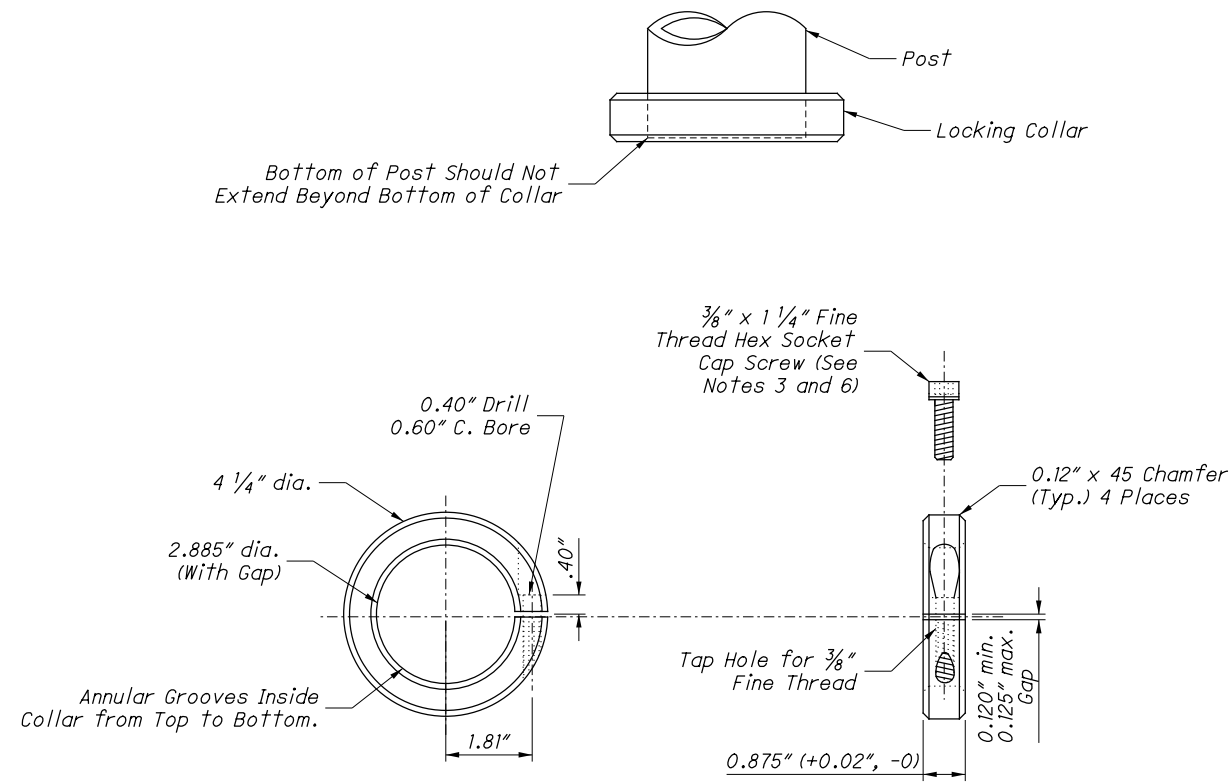
1. Furnish slip base casting fabricated from ductile iron conforming to ASTM A 536 Grade 65-45-12, and galvanized according to ASTM A 153, Class A.
2. Furnish locking collar machined from steel bar conforming to ASTM A 108 Grade 12L14, steel bar conforming to ASTM A 576 Grade 12L14 or 1026, or steel tubing conforming to ASTM A 519 Grade 12L14 or 1026, and electrodeposited zinc coated and supplemental chromate conversion coated to ASTM B 633 Class Fe/Zn 12 Type II.
3. Furnish hex socket cap screw manufactured according to ASTM A 574 with electrodeposited zinc coating and supplemental chromate conversion coating to ASTM B 633 Class Fe/Zn 12 Type II.
4. Center holes in the slip base and bolt-down anchor are for galvanizing venting and drainage. Exact hole placement may vary as needed.
5. Use bolt-down anchor for installations in existing concrete.
6. Tighten hex socket cap screw to 60-foot-pounds. Do not overtighten.
7. Tighten slip base bolts to between 40 and 80 foot-pounds. Tighten all bolts evenly by working around the support in approximately 10 foot-pound increments to assure balanced tension in the bolts. Tighten all three bolts to the same torque. Do not overtighten.
8. After tightening slip base bolts, drill a  $\frac{5}{16}$ " diameter hole in the pipe through the hole in the slip base casting, and drive in the coiled pin, to prevent pipe twisting in the slip base. Drive the coiled pin in such that approximately  $\frac{1}{4}$ " to  $\frac{3}{8}$ " of the pin remains protruding beyond the outside diameter of the slip base casting. The coiled pin shall be standard duty, stainless steel.
9. For signs less than 60" high, reduce the U-bracket height accordingly, such that the top of the U-bracket aligns with the top of the sign. For 60" high signs, use the U-bracket as shown. For signs over 60" high, use extenders of appropriate length such that the tops of the extenders align with the top of the sign.
10. For extrusheet sign attachment, use two no. 2 or no. 3 U-channel posts equal in length to the sign height. Clamp the U-channel posts vertically to the vertical arms of the U-bracket (and extenders, when used) with the sign pipe clamp 6" from each end and at a maximum interior spacing of 12". Fasten the extrusheet sign to each U-channel support with mounting clips, per Standard Construction Drawing (SCD) TC-51.11.
11. For flat sheet sign attachment, use no. 2 or no. 3 U-channel posts equal in length to the sign width, and in the quantity required in accordance with SCDs TC-52.10 and TC-52.20. Clamp the U-channel posts horizontally to the vertical arms of the U-bracket (and extenders, when used) with the sign pipe clamp. Fasten the flat sheet sign to each U-channel support as per SCD TC-41.20.
12. Refer to SCD TC-41.20 for U-channel post details.



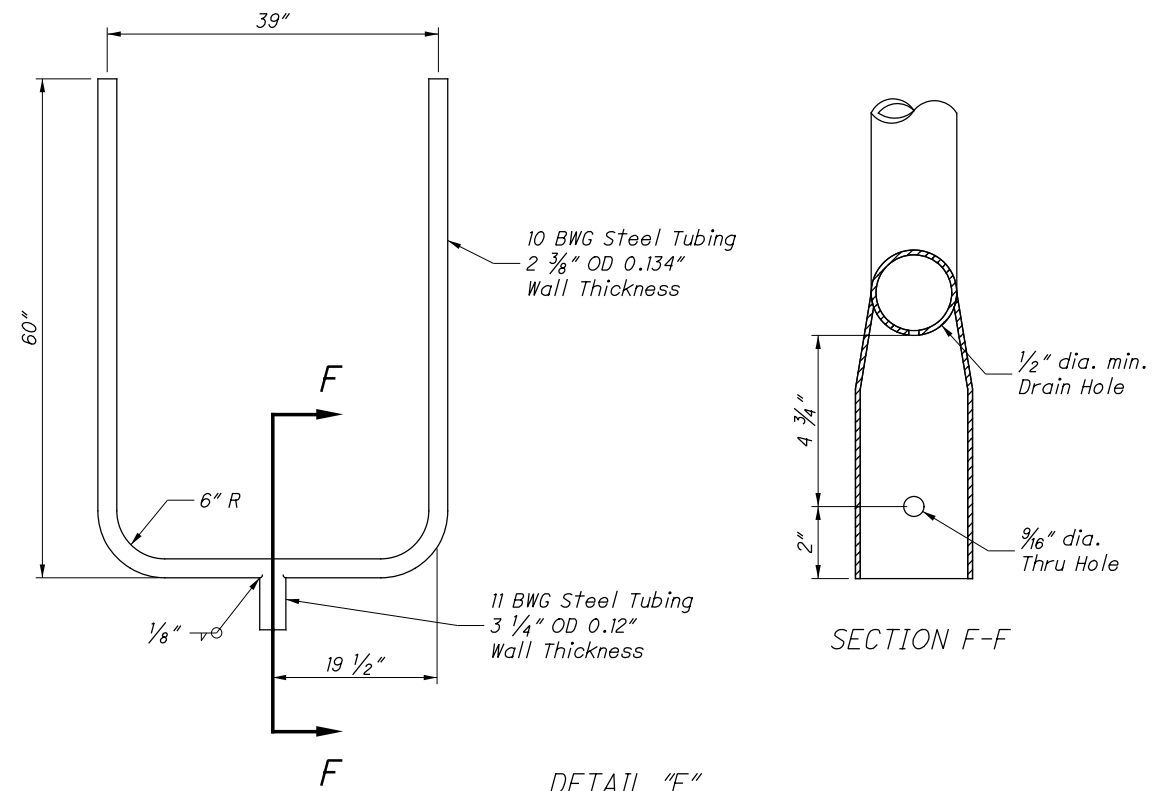
TRIANGULAR SLIP BASE PIPE SIGN SUPPORT

DETAIL "C"  
SLIP BASE CASTING  
(See Note 1)

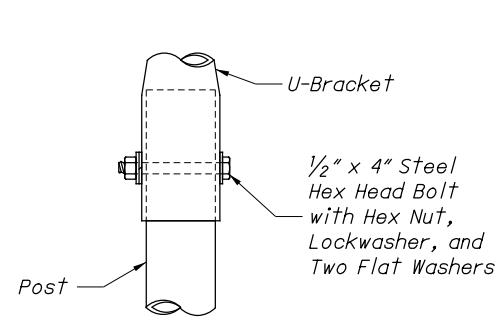
THIS DRAWING REPLACES TC-41.15 DATED 10-18-2013.



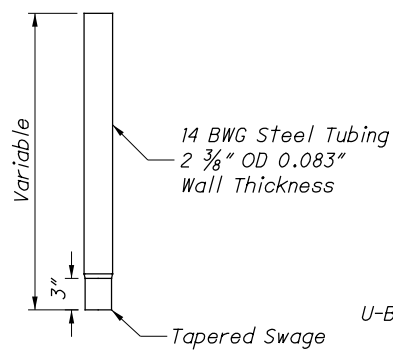
DETAIL "D"  
**LOCKING COLLAR**  
(See Note 2)



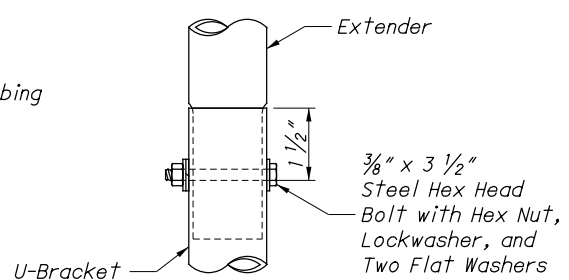
DETAIL "F"  
**U-BRACKET**  
(See Note 9)



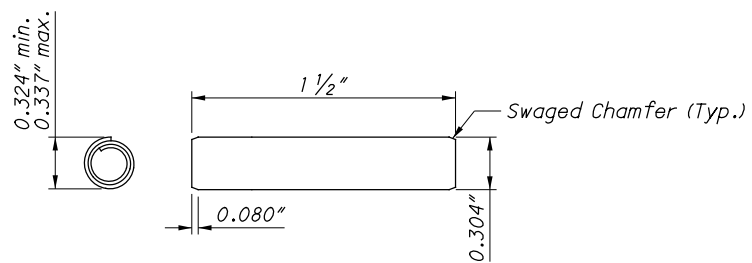
DETAIL "G"



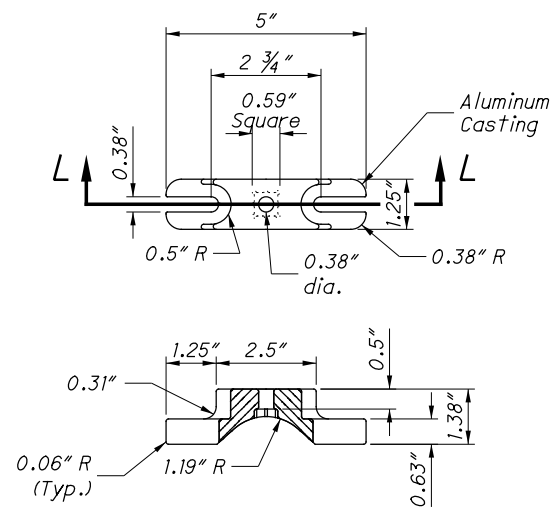
EXTENDER  
(See Note 9)



DETAIL "J"

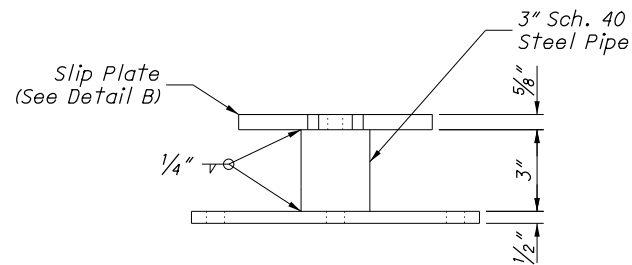
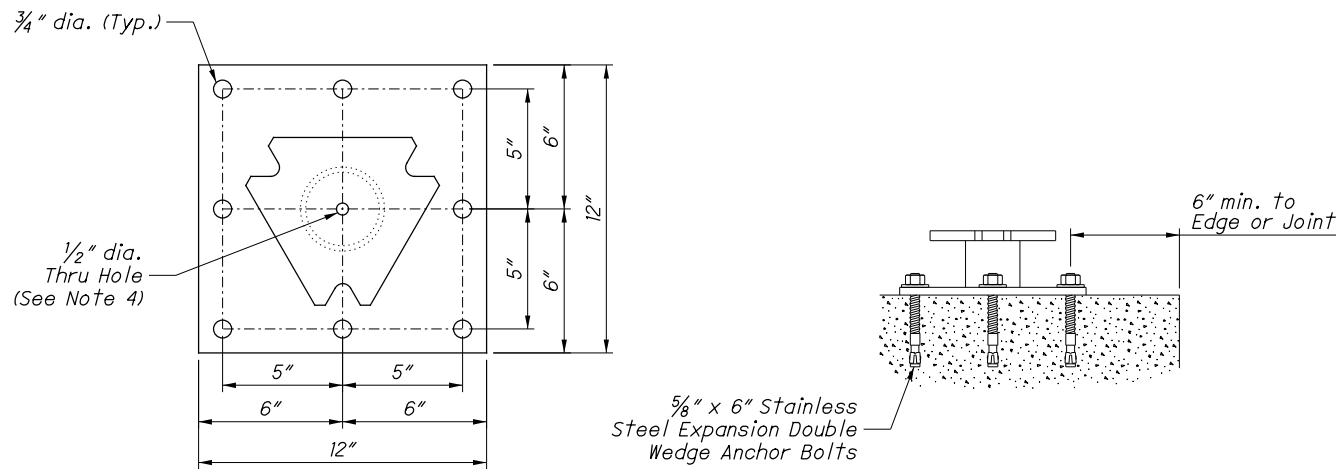


DETAIL "K"  
**COILED PIN**  
(See Note 8)

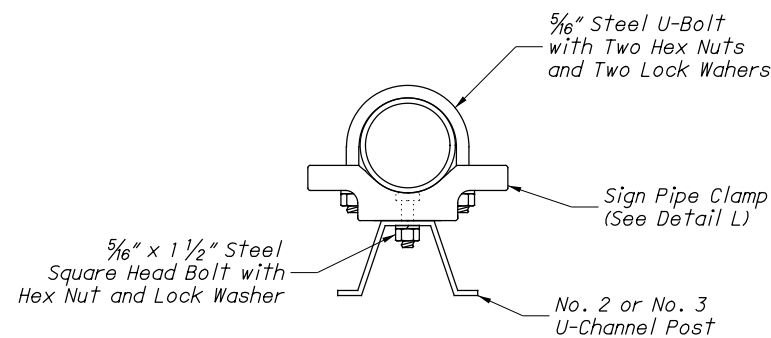


DETAIL "L"  
**SIGN PIPE CLAMP**

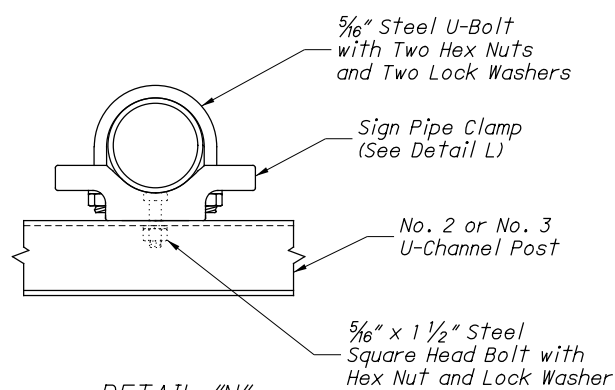
THIS DRAWING REPLACES TC-41.15 DATED 01-16-2009.



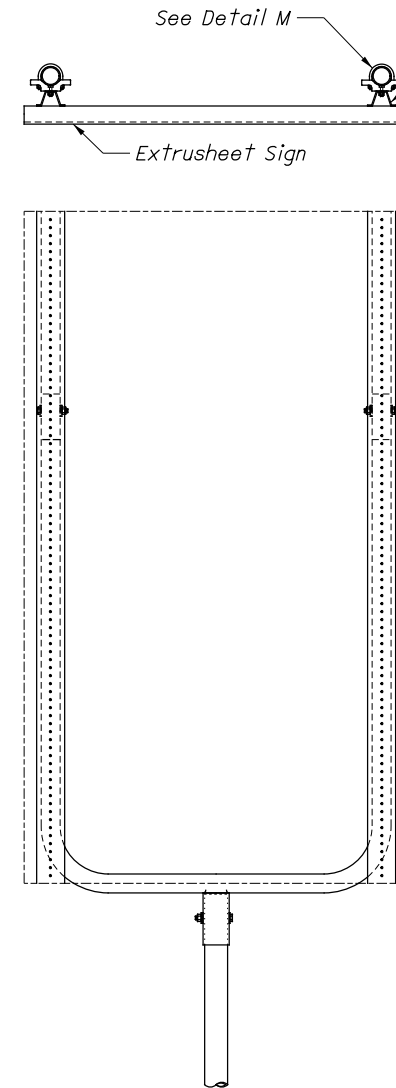
**BOLT-DOWN ANCHOR**  
(See Note 5)



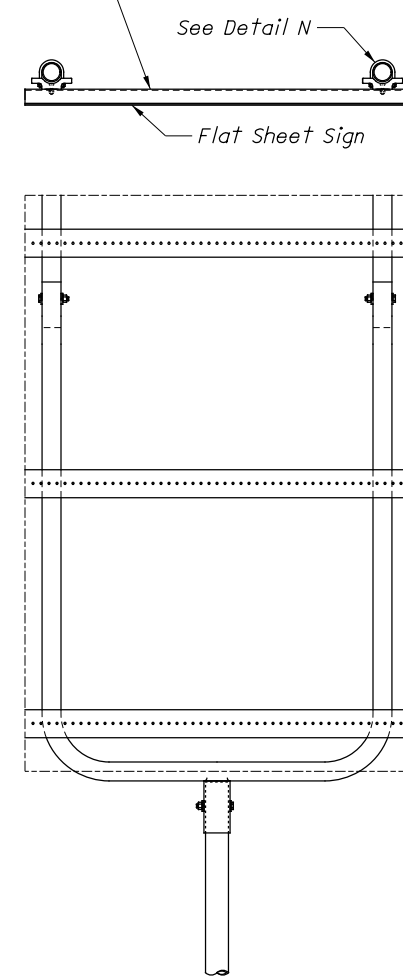
**DETAIL "M"**  
**CLAMP ASSEMBLY**  
(For Extrusheet Sign)



**DETAIL "N"**  
**CLAMP ASSEMBLY**  
(For Flat Sheet Sign)



**SIGN ATTACHMENT**  
**EXTRUSHEET**  
(See Note 10)



**SIGN ATTACHMENT**  
**FLAT SHEET**  
(See Note 11)